

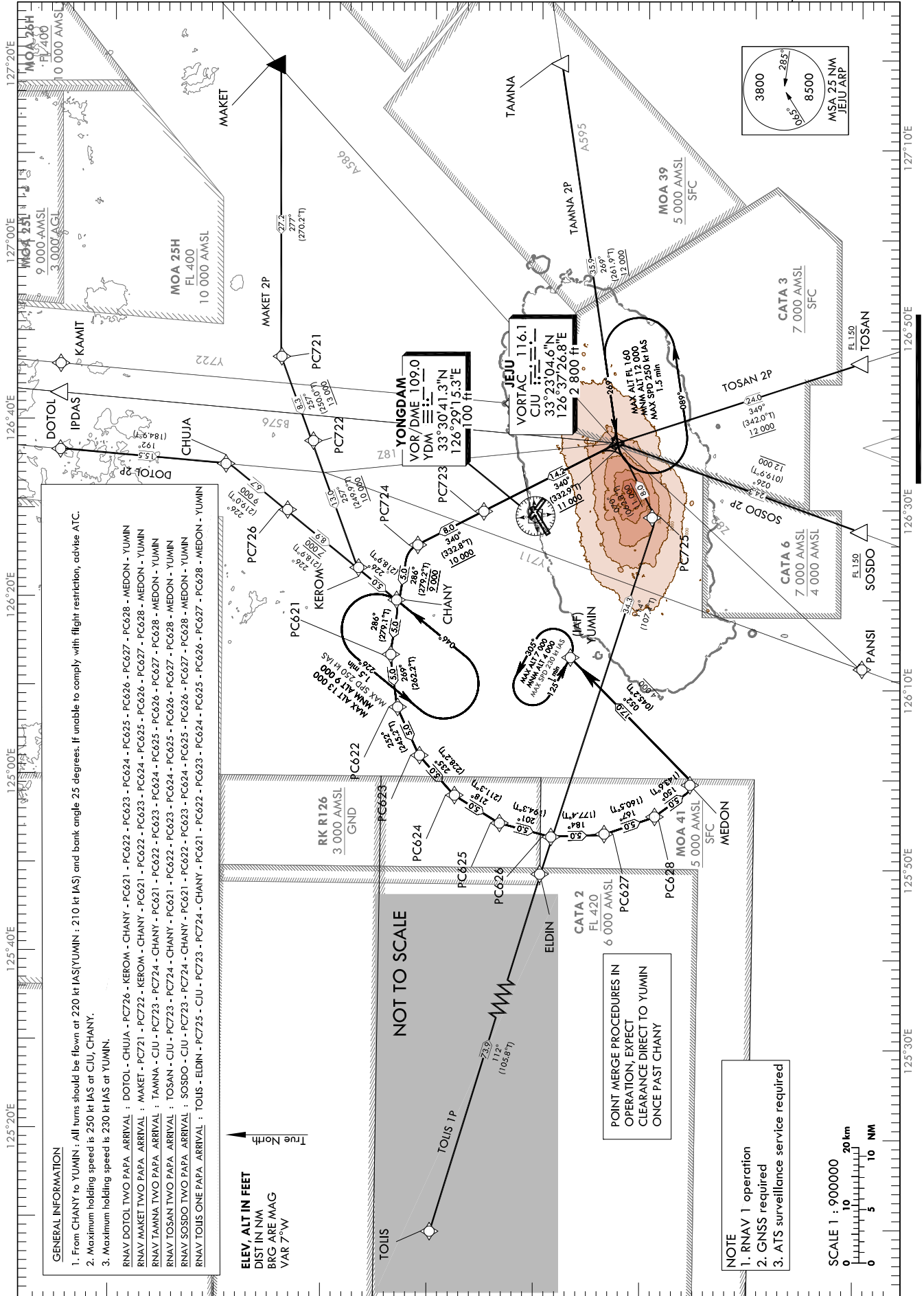
STANDARD ARRIVAL CHART
INSTRUMENT(STAR) - ICAO

TRANSITION ALT 14 000
TRANSITION LVL FL 140

JEJU APP 121.2
JEJU TWR 118.125
118.2

JEJU/Jeju Intl(RKPC)
RWY 07
RNAV DOTOL 2P, RNAV MAKET 2P
RNAV TAMNA 2P, RNAV TOSAN 2P
RNAV SOSDO 2P, RNAV TOLIS 1P

Note : Arrival under ICAO Flight Procedures.



Change : Amended coordinate format.

Standard Instrument Arrival Procedure Coding Tables

Serial Number	Path Descriptor	Waypoint Identifier	Fly over	Course/Track °M(T)	Distance (NM)	Turn direction	Altitude (ft)	Speed (kt)	Coordinates	VPA/TCH	Navigation specification	Remarks
001	IF	DOTOL	-	-	-	-	-	-	34°15'15.4"N 126°36'36.6"E	-	RNAV 1	-
002	TF	CHUIA	-	192(184.9)	15.5	-	-	-	33°59'47.3"N 126°35'00.2"E	-	RNAV 1	-
003	TF	PC726	-	226(219.0)	6.7	-	-9 000	-	33°54'32.2"N 126°29'54.4"E	-	RNAV 1	-
004	TF	KEROM	-	226(218.9)	8.9	-	@7 000	-	33°47'33.9"N 126°23'09.8"E	-	RNAV 1	-
005	TF	CHANY	-	226(218.9)	5.0	-	-	@220	33°43'39.9"N 126°19'24.0"E	-	RNAV 1	-
006	TF	PC621	-	286(279.1)	5.0	-	-	@220	33°44'27.4"N 126°13'28.9"E	-	RNAV 1	-
007	TF	PC622	-	269(262.2)	5.0	-	-	@220	33°43'46.4"N 126°07'32.6"E	-	RNAV 1	-
008	TF	PC623	-	252(245.2)	5.0	-	-	@220	33°41'40.2"N 126°02'06.2"E	-	RNAV 1	-
009	TF	PC624	-	235(228.2)	5.0	-	-	@220	33°38'19.9"N 125°57'38.2"E	-	RNAV 1	-
010	TF	PC625	-	218(211.3)	5.0	-	-	@220	33°34'03.1"N 125°54'31.8"E	-	RNAV 1	-
011	TF	PC626	-	201(194.3)	5.0	-	-	@220	33°29'11.9"N 125°53'02.9"E	-	RNAV 1	-
012	TF	PC627	-	184(177.4)	5.0	-	-	@220	33°24'11.7"N 125°53'19.1"E	-	RNAV 1	Bank angle 25°
013	TF	PC628	-	167(160.5)	5.0	-	-	@220	33°19'28.4"N 125°55'18.5"E	-	RNAV 1	Bank angle 25°
014	TF	MEDON	-	150(143.6)	5.0	-	@9 000	@220	33°15'26.4"N 125°58'50.7"E	-	RNAV 1	Bank angle 25°
015	TF	YUMIN	-	052(045.2)	17.0	-	+4 000	@210	33°27'25.7"N 126°13'15.5"E	-	RNAV 1	IAF

Serial Number	Path Descriptor	Waypoint Identifier	Fly over	Course/Track °M(T)	Distance (NM)	Turn direction	Altitude (ft)	Speed (kt)	Coordinates	VPA/TCH	Navigation specification	Remarks
001	IF	MAKET	-	-	-	-	-	-	33°54'52.4"N 127°19'53.0"E	-	RNAV 1	-
002	TF	PC721	-	277(270.2)	27.2	-	-	-	33°54'53.3"N 126°47'09.7"E	-	RNAV 1	-
003	TF	PC722	-	257(250.0)	8.3	-	+13 000	-	33°52'02.9"N 126°37'48.9"E	-	RNAV 1	-
004	TF	KEROM	-	257(249.9)	13.0	-	+10 000	-	33°47'33.9"N 126°23'09.8"E	-	RNAV 1	-
005	TF	CHANY	-	226(218.9)	5.0	-	@9 000	@220	33°43'39.9"N 126°19'24.0"E	-	RNAV 1	-
006	TF	PC621	-	286(279.1)	5.0	-	-	@220	33°44'27.4"N 126°13'28.9"E	-	RNAV 1	-
007	TF	PC622	-	269(262.2)	5.0	-	-	@220	33°43'46.4"N 126°07'32.6"E	-	RNAV 1	-
008	TF	PC623	-	252(245.2)	5.0	-	-	@220	33°41'40.2"N 126°02'06.2"E	-	RNAV 1	-
009	TF	PC624	-	235(228.2)	5.0	-	-	@220	33°38'19.9"N 125°57'38.2"E	-	RNAV 1	-
010	TF	PC625	-	218(211.3)	5.0	-	-	@220	33°34'03.1"N 125°54'31.8"E	-	RNAV 1	-
011	TF	PC626	-	201(194.3)	5.0	-	-	@220	33°29'11.9"N 125°53'02.9"E	-	RNAV 1	-
012	TF	PC627	-	184(177.4)	5.0	-	-	@220	33°24'11.7"N 125°53'19.1"E	-	RNAV 1	Bank angle 25°
013	TF	PC628	-	167(160.5)	5.0	-	-	@220	33°19'28.4"N 125°55'18.5"E	-	RNAV 1	Bank angle 25°
014	TF	MEDON	-	150(143.6)	5.0	-	@9 000	@220	33°15'26.4"N 125°58'50.7"E	-	RNAV 1	Bank angle 25°
015	TF	YUMIN	-	052(045.2)	17.0	-	+4 000	@210	33°27'25.7"N 126°13'15.5"E	-	RNAV 1	IAF

Change : Amended coordinate format.

JEJU/Jeju Intl(RKPC)
RWY 07

RNAV TAMNA 2P, RNAV TOSAN 2P

AERONAUTICAL DATA TABULATION

Standard Instrument Arrival Procedure Coding Tables

RNAV TAMNA 2P												
Serial Number	Path Descriptor	Waypoint Identifier	Fly-over	Course/Track M(T)	Distance (NM)	Turn direction	Altitude (ft)	Speed (kt)	Coordinates	Navigation specification	Remarks	
001	IF	TAMNA	-	-	-	-	-	-	33°28'15.5"N 127°19'53.0"E	RNAV 1	-	
002	TF	CJU	-	269(261.9)	35.9	-	+12 000	-	33°23'04.6"N 126°37'26.8"E	RNAV 1	-	
003	TF	PC723	-	340(332.9)	14.2	-	+11 000	-	33°35'44.3"N 126°29'41.9"E	RNAV 1	-	
004	TF	PC724	-	340(332.8)	8.0	-	+10 000	-	33°42'52.0"N 126°25'19.1"E	RNAV 1	-	
005	TF	CHANY	-	286(279.2)	5.0	-	@9 000	@220	33°43'39.9"N 126°19'24.0"E	RNAV 1	-	
006	TF	PC621	-	286(279.1)	5.0	-	-	@220	33°44'27.4"N 126°13'28.9"E	RNAV 1	-	
007	TF	PC622	-	269(262.2)	5.0	-	-	@220	33°43'46.4"N 126°07'32.6"E	RNAV 1	-	
008	TF	PC623	-	252(245.2)	5.0	-	-	@220	33°41'40.2"N 126°02'06.2"E	RNAV 1	-	
009	TF	PC624	-	235(228.2)	5.0	-	-	@220	33°38'19.9"N 125°57'38.2"E	RNAV 1	-	
010	TF	PC625	-	218(211.3)	5.0	-	-	@220	33°34'03.1"N 125°54'31.8"E	RNAV 1	-	
011	TF	PC626	-	201(194.3)	5.0	-	-	@220	33°29'11.9"N 125°53'02.9"E	RNAV 1	-	
012	TF	PC627	-	184(177.4)	5.0	-	-	@220	33°24'11.7"N 125°53'19.1"E	RNAV 1	Bank angle 25°	
013	TF	PC628	-	167(160.5)	5.0	-	-	@220	33°19'28.4"N 125°55'18.5"E	RNAV 1	Bank angle 25°	
014	TF	MEDON	-	150(143.6)	5.0	-	@9 000	@220	33°15'26.4"N 125°58'50.7"E	RNAV 1	Bank angle 25°	
015	TF	YUMIN	-	052(045.2)	17.0	-	+4 000	@210	33°27'25.7"N 126°13'15.5"E	RNAV 1	IAF	

RNAV TOSAN 2P												
Serial Number	Path Descriptor	Waypoint Identifier	Fly-over	Course/Track M(T)	Distance (NM)	Turn direction	Altitude (ft)	Speed (kt)	Coordinates	Navigation specification	Remarks	
001	IF	TOSAN	-	-	-	-	+FL 150	-	33°00'12.0"N 126°46'18.7"E	RNAV 1	-	
002	TF	CJU	-	349(342.0)	24.0	-	+12 000	-	33°23'04.6"N 126°37'26.8"E	RNAV 1	-	
003	TF	PC723	-	340(332.9)	14.2	-	+11 000	-	33°35'44.3"N 126°29'41.9"E	RNAV 1	-	
004	TF	PC724	-	340(332.8)	8.0	-	+10 000	-	33°42'52.0"N 126°25'19.1"E	RNAV 1	-	
005	TF	CHANY	-	286(279.2)	5.0	-	@9 000	@220	33°43'39.9"N 126°19'24.0"E	RNAV 1	-	
006	TF	PC621	-	286(279.1)	5.0	-	-	@220	33°44'27.4"N 126°13'28.9"E	RNAV 1	-	
007	TF	PC622	-	269(262.2)	5.0	-	-	@220	33°43'46.4"N 126°07'32.6"E	RNAV 1	-	
008	TF	PC623	-	252(245.2)	5.0	-	-	@220	33°41'40.2"N 126°02'06.2"E	RNAV 1	-	
009	TF	PC624	-	235(228.2)	5.0	-	-	@220	33°38'19.9"N 125°57'38.2"E	RNAV 1	-	
010	TF	PC625	-	218(211.3)	5.0	-	-	@220	33°34'03.1"N 125°54'31.8"E	RNAV 1	-	
011	TF	PC626	-	201(194.3)	5.0	-	-	@220	33°29'11.9"N 125°53'02.9"E	RNAV 1	-	
012	TF	PC627	-	184(177.4)	5.0	-	-	@220	33°24'11.7"N 125°53'19.1"E	RNAV 1	Bank angle 25°	
013	TF	PC628	-	167(160.5)	5.0	-	-	@220	33°19'28.4"N 125°55'18.5"E	RNAV 1	Bank angle 25°	
014	TF	MEDON	-	150(143.6)	5.0	-	@9 000	@220	33°15'26.4"N 125°58'50.7"E	RNAV 1	Bank angle 25°	
015	TF	YUMIN	-	052(045.2)	17.0	-	+4 000	@210	33°27'25.7"N 126°13'15.5"E	RNAV 1	IAF	

Change : Amended coordinate format.

AERONAUTICAL DATA TABULATION

Standard Instrument Arrival Procedure Coding Tables

RNAV SOSDO 2P

Serial Number	Path Descriptor	Waypoint Identifier	Fly-over	Course/Track M(T)	Distance (NM)	Turn direction	Altitude (ft)	Speed (kt)	Coordinates	Navigation specification	Remarks
001	IF	SOSDO	-	-	-	-	+FL 150	-	33°00'12.0"N 126°27'35.0"E	RNAV 1	-
002	TF	CJU	-	026(019.9)	24.3	-	+12 000	-	33°23'04.6"N 126°37'26.8"E	RNAV 1	-
003	TF	PC723	-	340(332.9)	14.2	-	+11 000	-	33°35'44.3"N 126°29'41.9"E	RNAV 1	-
004	TF	PC724	-	340(332.8)	8.0	-	+10 000	-	33°42'52.0"N 126°25'19.1"E	RNAV 1	-
005	TF	CHANY	-	286(279.2)	5.0	-	@9 000	@220	33°43'39.9"N 126°19'24.0"E	RNAV 1	-
006	TF	PC621	-	286(279.1)	5.0	-	-	@220	33°44'27.4"N 126°13'28.9"E	RNAV 1	-
007	TF	PC622	-	269(262.2)	5.0	-	-	@220	33°43'46.4"N 126°07'32.6"E	RNAV 1	-
008	TF	PC623	-	252(245.2)	5.0	-	-	@220	33°41'40.2"N 126°02'06.2"E	RNAV 1	-
009	TF	PC624	-	235(228.2)	5.0	-	-	@220	33°38'19.9"N 125°57'38.2"E	RNAV 1	-
010	TF	PC625	-	218(211.3)	5.0	-	-	@220	33°34'03.1"N 125°54'31.8"E	RNAV 1	-
011	TF	PC626	-	201(194.3)	5.0	-	-	@220	33°29'11.9"N 125°53'02.9"E	RNAV 1	-
012	TF	PC627	-	184(177.4)	5.0	-	-	@220	33°24'11.7"N 125°53'19.1"E	RNAV 1	Bank angle 25°
013	TF	PC628	-	167(160.5)	5.0	-	-	@220	33°19'28.4"N 125°55'18.5"E	RNAV 1	Bank angle 25°
014	TF	MEDON	-	150(143.6)	5.0	-	@9 000	@220	33°15'26.4"N 125°58'50.7"E	RNAV 1	Bank angle 25°
015	TF	YUMIN	-	052(045.2)	17.0	-	+4 000	@210	33°27'25.7"N 126°13'15.5"E	RNAV 1	IAF

RNAV TOLIS 1P

Serial Number	Path Descriptor	Waypoint Identifier	Fly-over	Course/Track M(T)	Distance (NM)	Turn direction	Altitude (ft)	Speed (kt)	Coordinates	Navigation specification	Remarks
001	IF	TOLIS	-	-	-	-	-	-	33°50'30.0"N 124°24'52.6"E	RNAV 1	-
002	TF	ELDIN	-	112(105.8)	73.9	-	-	-	33°29'47.6"N 125°49'53.1"E	RNAV 1	-
003	TF	PC725	-	114(107.4)	34.3	-	-	-	33°19'25.2"N 126°28'56.9"E	RNAV 1	-
004	TF	CJU	-	070(062.8)	8.0	-	+11 000	-	33°23'04.6"N 126°37'26.8"E	RNAV 1	-
005	TF	PC723	-	340(332.9)	14.2	-	+11 000	-	33°35'44.3"N 126°29'41.9"E	RNAV 1	-
006	TF	PC724	-	340(332.8)	8.0	-	+10 000	-	33°42'52.0"N 126°25'19.1"E	RNAV 1	-
007	TF	CHANY	-	286(279.2)	5.0	-	@9 000	@220	33°43'39.9"N 126°19'24.0"E	RNAV 1	-
008	TF	PC621	-	286(279.1)	5.0	-	-	@220	33°44'27.4"N 126°13'28.9"E	RNAV 1	-
009	TF	PC622	-	269(262.2)	5.0	-	-	@220	33°43'46.4"N 126°07'32.6"E	RNAV 1	-
010	TF	PC623	-	252(245.2)	5.0	-	-	@220	33°41'40.2"N 126°02'06.2"E	RNAV 1	-
011	TF	PC624	-	235(228.2)	5.0	-	-	@220	33°38'19.9"N 125°57'38.2"E	RNAV 1	-
012	TF	PC625	-	218(211.3)	5.0	-	-	@220	33°34'03.1"N 125°54'31.8"E	RNAV 1	-
013	TF	PC626	-	201(194.3)	5.0	-	-	@220	33°29'11.9"N 125°53'02.9"E	RNAV 1	-
014	TF	PC627	-	184(177.4)	5.0	-	-	@220	33°24'11.7"N 125°53'19.1"E	RNAV 1	Bank angle 25°
015	TF	PC628	-	167(160.5)	5.0	-	-	@220	33°19'28.4"N 125°55'18.5"E	RNAV 1	Bank angle 25°
016	TF	MEDON	-	150(143.6)	5.0	-	@9 000	@220	33°15'26.4"N 125°58'50.7"E	RNAV 1	Bank angle 25°
017	TF	YUMIN	-	052(045.2)	17.0	-	+4 000	@210	33°27'25.7"N 126°13'15.5"E	RNAV 1	IAF

Change : Amended coordinate format.

AERONAUTICAL DATA TABULATION

Standard Instrument Arrival Procedure Coding Tables

HOLDING PROCEDURE		Path Descriptor	Waypoint Identifier	Fly- over	Course/Track °M(°T)	Time (min)	Turn direction	Altitude (ft)	Speed (kt)	Coordinates	VPA/ TCH	Navigation specification	Remarks
RNAV DOTOL 2P	HM	CHANY	Y	046(038.9)	1.5	L	-13 000 +9 000	-250	33°43'39.9"N 126°19'24.0"E	-	RNAV 1	-	
	HM	YUMIN	Y	125(118.3)	1.0	L	-7 000 +4 000	-230	33°27'25.7"N 126°13'15.5"E	-	RNAV 1	-	
RNAV MAKET 2P	HM	CHANY	Y	046(038.9)	1.5	L	-13 000 +9 000	-250	33°43'39.9"N 126°19'24.0"E	-	RNAV 1	-	
	HM	YUMIN	Y	125(118.3)	1.0	L	-7 000 +4 000	-230	33°27'25.7"N 126°13'15.5"E	-	RNAV 1	-	
RNAV TAMNA 2P	HM	CJU	Y	269(261.9)	1.5	L	-FL 160 +12 000	-250	33°23'04.6"N 126°37'26.8"E	-	RNAV 1	-	
	HM	CHANY	Y	046(038.9)	1.5	L	-13 000 +9 000	-250	33°43'39.9"N 126°19'24.0"E	-	RNAV 1	-	
RNAV TOSAN 2P	HM	YUMIN	Y	125(118.3)	1.0	L	-7 000 +4 000	-230	33°27'25.7"N 126°13'15.5"E	-	RNAV 1	-	
	HM	CJU	Y	269(261.9)	1.5	L	-FL 160 +12 000	-250	33°23'04.6"N 126°37'26.8"E	-	RNAV 1	-	
RNAV SOSDO 2P	HM	CHANY	Y	046(038.9)	1.5	L	-13 000 +9 000	-250	33°43'39.9"N 126°19'24.0"E	-	RNAV 1	-	
	HM	YUMIN	Y	125(118.3)	1.0	L	-7 000 +4 000	-230	33°27'25.7"N 126°13'15.5"E	-	RNAV 1	-	
RNAV TOLIS 1P	HM	CJU	Y	269(261.9)	1.5	L	-FL 160 +12 000	-250	33°23'04.6"N 126°37'26.8"E	-	RNAV 1	-	
	HM	CHANY	Y	046(038.9)	1.5	L	-13 000 +9 000	-250	33°43'39.9"N 126°19'24.0"E	-	RNAV 1	-	
	HM	YUMIN	Y	125(118.3)	1.0	L	-7 000 +4 000	-230	33°27'25.7"N 126°13'15.5"E	-	RNAV 1	-	

Change : Amended coordinate format.

INTENTIONALLY

LEFT

BLANK

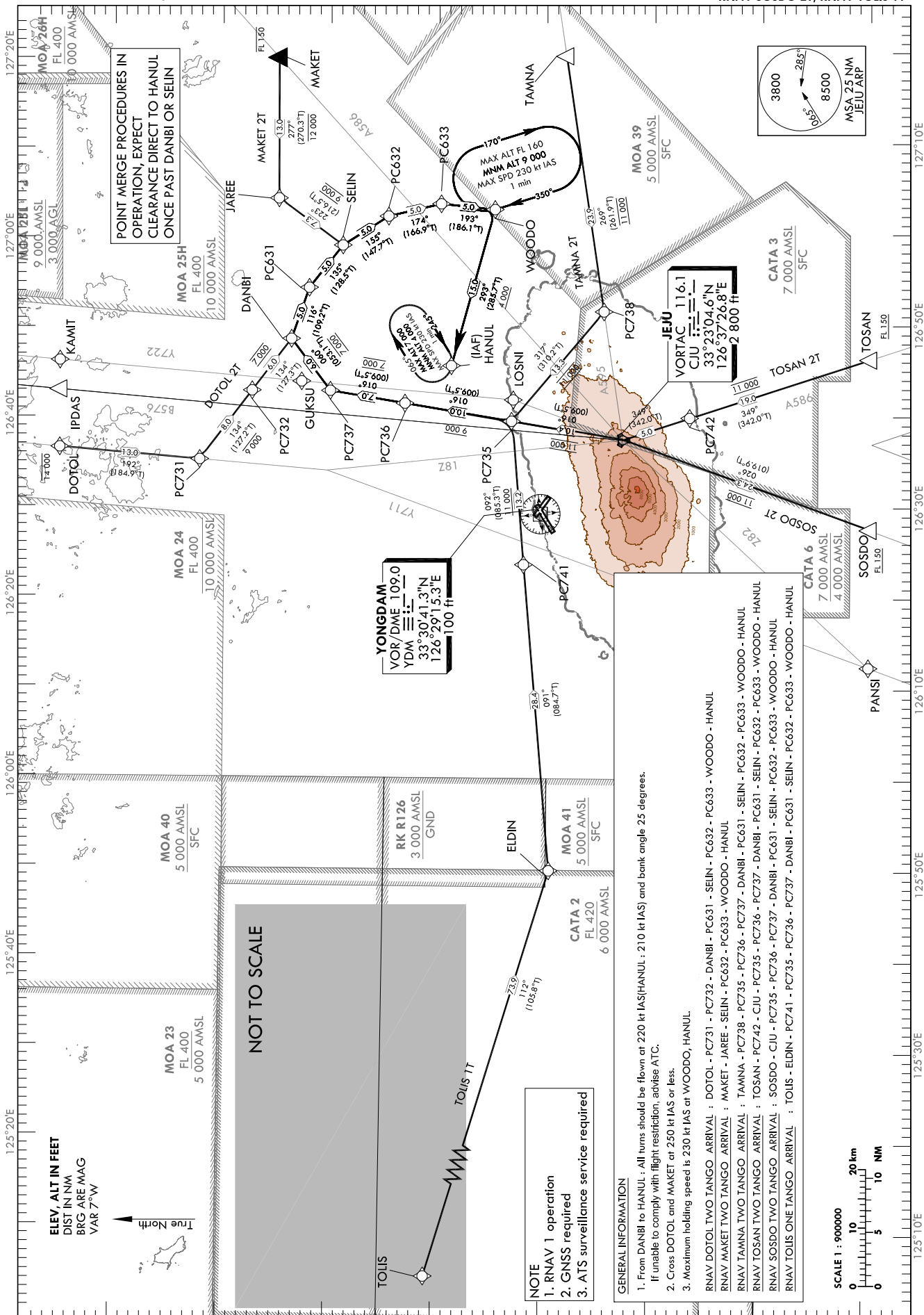
**STANDARD ARRIVAL CHART
INSTRUMENT(STAR) - ICAO**

TRANSITION ALT 14 000
TRANSITION LVL FL 140

JEU APP 121.2
124.05
JEU TWR 118.125
118.2

JEU/Jeju Intl(RKPC)
RWY 25
RNAV DOTOL 2T, RNAV MAKET 2T
RNAV TAMNA 2T, RNAV TOSAN 2T
RNAV SOSDO 2T, RNAV TOLIS 1T

Note : Arrival under ICAO Flight Procedures.



Change : Amended coordinate format.

JEJU/Jeju Intl(RKPC)
RWY 25
RNAV DOTOL 2T, RNAV MAKET 2T

AERONAUTICAL DATA TABULATION

Standard Instrument Arrival Procedure Coding Tables

RNAV DOTOL 2T												
Serial Number	Path Descriptor	Waypoint Identifier	Fly-over	Course/Track °M(°T)	Distance (NM)	Turn direction	Altitude (ft)	Speed (kt)	Coordinates	VPA/TCH	Navigation specification	Remarks
001	IF	DOTOL	-	-	-	-	-14 000	-250	34°15'15.4"N 126°36'36.6"E	-	RNAV 1	-
002	TF	PC731	-	192(184.9)	13.0	-	-	-	34°02'17.0"N 126°35'15.7"E	-	RNAV 1	-
003	TF	PC732	-	134(127.2)	8.0	-	-9 000	-	33°57'26.0"N 126°42'55.3"E	-	RNAV 1	-
004	TF	DANBI	-	134(127.3)	6.0	-	@7 000	@220	33°53'47.5"N 126°48'39.5"E	-	RNAV 1	-
005	TF	PC631	-	116(109.2)	5.0	-	-	@220	33°52'08.3"N 126°54'19.7"E	-	RNAV 1	-
006	TF	SELIN	-	135(128.5)	5.0	-	-	@220	33°49'01.2"N 126°59'01.5"E	-	RNAV 1	-
007	TF	PC632	-	155(147.7)	5.0	-	-	@220	33°44'47.1"N 127°02'13.7"E	-	RNAV 1	Bank angle 25°
008	TF	PC633	-	174(166.9)	5.0	-	-	@220	33°39'54.3"N 127°03'35.0"E	-	RNAV 1	Bank angle 25°
009	TF	WOODO	-	193(186.1)	5.0	-	@7 000	@220	33°34'55.5"N 127°02'56.6"E	-	RNAV 1	-
010	TF	HANUL	-	293(285.7)	15.0	-	+4 000	@210	33°38'58.6"N 126°45'38.8"E	-	RNAV 1	IAF

RNAV MAKET 2T												
Serial Number	Path Descriptor	Waypoint Identifier	Fly-over	Course/Track °M(°T)	Distance (NM)	Turn direction	Altitude (ft)	Speed (kt)	Coordinates	VPA/TCH	Navigation specification	Remarks
001	IF	MAKET	-	-	-	-	-FL 150	-250	33°54'52.4"N 127°19'53.0"E	-	RNAV 1	-
002	TF	JAREE	-	277(270.3)	13.0	-	-12 000	-	33°54'56.0"N 127°04'15.7"E	-	RNAV 1	-
003	TF	SELIN	-	223(216.5)	7.3	-	@9 000	@220	33°49'01.2"N 126°59'01.5"E	-	RNAV 1	-
004	TF	PC632	-	155(147.7)	5.0	-	-	@220	33°44'47.1"N 127°02'13.7"E	-	RNAV 1	Bank angle 25°
005	TF	PC633	-	174(166.9)	5.0	-	-	@220	33°39'54.3"N 127°03'35.0"E	-	RNAV 1	Bank angle 25°
006	TF	WOODO	-	193(186.1)	5.0	-	@9 000	@220	33°34'55.5"N 127°02'56.6"E	-	RNAV 1	-
007	TF	HANUL	-	293(285.7)	15.0	-	+4 000	@210	33°38'58.6"N 126°45'38.8"E	-	RNAV 1	IAF

Change : Amended coordinate format.

JEJU/Jeju Intl(RKPC)
RWY 25
RNAV TAMNA 2T, RNAV TOSAN 2T

AERONAUTICAL DATA TABULATION

Standard Instrument Arrival Procedure Coding Tables

RNAV TAMNA 2T

Serial Number	Path Descriptor	Waypoint Identifier	Fly-over	Course/Track °M(°T)	Distance (NM)	Turn direction	Altitude (ft)	Speed (kt)	Coordinates	VPA/RDH	Navigation specification	Remarks
001	IF	TAMNA	-	-	-	-	-	-	33°28'15.5"N 127°19'53.0"E	-	RNAV 1	-
002	TF	PC738	-	269(261.9)	23.9	-	@11 000	-	33°24'50.2"N 126°51'37.6"E	-	RNAV 1	-
003	TF	PC735	-	317(310.2)	13.3	-	@11 000	-	33°33'23.5"N 126°39'30.8"E	-	RNAV 1	-
004	TF	PC736	-	016(009.5)	10.0	-	-9 000	-	33°43'16.3"N 126°41'29.9"E	-	RNAV 1	-
005	TF	PC737	-	016(009.5)	7.0	-	@7 000	-	33°50'11.3"N 126°42'53.5"E	-	RNAV 1	-
006	TF	DANBI	-	060(053.1)	6.0	-	-	@220	33°53'47.5"N 126°48'39.5"E	-	RNAV 1	-
007	TF	PC631	-	116(109.2)	5.0	-	-	@220	33°52'08.3"N 126°54'19.7"E	-	RNAV 1	-
008	TF	SELIN	-	135(128.5)	5.0	-	-	@220	33°49'01.2"N 126°59'01.5"E	-	RNAV 1	-
009	TF	PC632	-	155(147.7)	5.0	-	-	@220	33°44'47.1"N 127°02'13.7"E	-	RNAV 1	Bank angle 25°
010	TF	PC633	-	174(166.9)	5.0	-	-	@220	33°39'54.3"N 127°03'35.0"E	-	RNAV 1	Bank angle 25°
011	TF	WOODO	-	193(186.1)	5.0	-	@7 000	@220	33°34'55.5"N 127°02'56.6"E	-	RNAV 1	-
012	TF	HANIUL	-	293(285.7)	15.0	-	+4 000	@210	33°38'58.6"N 126°45'38.8"E	-	RNAV 1	IAF

RNAV TOSAN 2T

Serial Number	Path Descriptor	Waypoint Identifier	Fly-over	Course/Track °M(°T)	Distance (NM)	Turn direction	Altitude (ft)	Speed (kt)	Coordinates	VPA/RDH	Navigation specification	Remarks
001	IF	TOSAN	-	-	-	-	+FL 150	-	33°00'12.0"N 126°46'18.7"E	-	RNAV 1	-
002	TF	PC742	-	349(342.0)	19.0	-	@11 000	-	33°18'16.6"N 126°39'18.8"E	-	RNAV 1	-
003	TF	CJU	-	349(342.0)	5.0	-	-	-	33°23'04.6"N 126°37'26.8"E	-	RNAV 1	-
004	TF	PC735	-	016(009.5)	10.4	-	@11 000	-	33°33'23.5"N 126°39'30.8"E	-	RNAV 1	-
005	TF	PC736	-	016(009.5)	10.0	-	-9 000	-	33°43'16.3"N 126°41'29.9"E	-	RNAV 1	-
006	TF	PC737	-	016(009.5)	7.0	-	@7 000	-	33°50'11.3"N 126°42'53.5"E	-	RNAV 1	-
007	TF	DANBI	-	060(053.1)	6.0	-	-	@220	33°53'47.5"N 126°48'39.5"E	-	RNAV 1	-
008	TF	PC631	-	116(109.2)	5.0	-	-	@220	33°52'08.3"N 126°54'19.7"E	-	RNAV 1	-
009	TF	SELIN	-	135(128.5)	5.0	-	-	@220	33°49'01.2"N 126°59'01.5"E	-	RNAV 1	-
010	TF	PC632	-	155(147.7)	5.0	-	-	@220	33°44'47.1"N 127°02'13.7"E	-	RNAV 1	Bank angle 25°
011	TF	PC633	-	174(166.9)	5.0	-	-	@220	33°39'54.3"N 127°03'35.0"E	-	RNAV 1	Bank angle 25°
012	TF	WOODO	-	193(186.1)	5.0	-	@7 000	@220	33°34'55.5"N 127°02'56.6"E	-	RNAV 1	-
013	TF	HANIUL	-	293(285.7)	15.0	-	+4 000	@210	33°38'58.6"N 126°45'38.8"E	-	RNAV 1	IAF

Change : Amended coordinate format.

JEJU/Jeju Intl(RKPC)
RWY 25
RNAV SOSDO 2T, RNAV TOLIS 1T

AERONAUTICAL DATA TABULATION

Standard Instrument Arrival Procedure Coding Tables

RNAV SOSDO 2T												
Serial Number	Path Descriptor	Waypoint Identifier	Fly-over	Course/Track °M(T)	Distance (NM)	Turn direction	Altitude (ft)	Speed (kt)	Coordinates	VPA/RDH	Navigation specification	Remarks
001	IF	SOSDO	-	-	-	-	+FL 150	-	33°00'12.0"N 126°27'35.0"E	-	RNAV 1	-
002	TF	CJU	-	026(019.9)	24.3	-	@11 000	-	33°23'04.6"N 126°37'26.8"E	-	RNAV 1	-
003	TF	PC735	-	016(009.5)	10.4	-	@11 000	-	33°33'23.5"N 126°39'30.8"E	-	RNAV 1	-
004	TF	PC736	-	016(009.5)	10.0	-	-9 000	-	33°43'16.3"N 126°41'29.9"E	-	RNAV 1	-
005	TF	PC737	-	016(009.5)	7.0	-	@7 000	-	33°50'11.3"N 126°42'53.5"E	-	RNAV 1	-
006	TF	DANBI	-	060(053.1)	6.0	-	-	@220	33°53'47.5"N 126°48'39.5"E	-	RNAV 1	-
007	TF	PC631	-	116(109.2)	5.0	-	-	@220	33°52'08.3"N 126°54'19.7"E	-	RNAV 1	-
008	TF	SELIN	-	135(128.5)	5.0	-	-	@220	33°49'01.2"N 126°59'01.5"E	-	RNAV 1	-
009	TF	PC632	-	155(147.7)	5.0	-	-	@220	33°44'47.1"N 127°02'13.7"E	-	RNAV 1	Bank angle 25°
010	TF	PC633	-	174(166.9)	5.0	-	-	@220	33°39'54.3"N 127°03'35.0"E	-	RNAV 1	Bank angle 25°
011	TF	WOODO	-	193(186.1)	5.0	-	@7 000	@220	33°34'55.5"N 127°02'56.6"E	-	RNAV 1	-
012	TF	HANUL	-	293(285.7)	15.0	-	+4 000	@210	33°38'58.6"N 126°45'38.8"E	-	RNAV 1	IAF

RNAV TOLIS 1T												
Serial Number	Path Descriptor	Waypoint Identifier	Fly-over	Course/Track °M(T)	Distance (NM)	Turn direction	Altitude (ft)	Speed (kt)	Coordinates	VPA/RDH	Navigation specification	Remarks
001	IF	TOLIS	-	-	-	-	-	-	35°50'30.0"N 124°24'52.6"E	-	RNAV 1	-
002	TF	ELDIN	-	112(105.8)	73.9	-	-	-	33°29'47.6"N 125°49'53.1"E	-	RNAV 1	-
003	TF	PC741	-	091(084.7)	28.4	-	-	-	33°32'19.6"N 126°23'42.6"E	-	RNAV 1	-
004	TF	PC735	-	092(085.3)	13.2	-	+11 000	-	33°33'23.5"N 126°39'30.8"E	-	RNAV 1	-
005	TF	PC736	-	016(009.5)	10.0	-	-9 000	-	33°43'16.3"N 126°41'29.9"E	-	RNAV 1	-
006	TF	PC737	-	016(009.5)	7.0	-	@7 000	-	33°50'11.3"N 126°42'53.5"E	-	RNAV 1	-
007	TF	DANBI	-	060(053.1)	6.0	-	-	@220	33°53'47.5"N 126°48'39.5"E	-	RNAV 1	-
008	TF	PC631	-	116(109.2)	5.0	-	-	@220	33°52'08.3"N 126°54'19.7"E	-	RNAV 1	-
009	TF	SELIN	-	135(128.5)	5.0	-	-	@220	33°49'01.2"N 126°59'01.5"E	-	RNAV 1	-
010	TF	PC632	-	155(147.7)	5.0	-	-	@220	33°44'47.1"N 127°02'13.7"E	-	RNAV 1	Bank angle 25°
011	TF	PC633	-	174(166.9)	5.0	-	-	@220	33°39'54.3"N 127°03'35.0"E	-	RNAV 1	Bank angle 25°
012	TF	WOODO	-	193(186.1)	5.0	-	@7 000	@220	33°34'55.5"N 127°02'56.6"E	-	RNAV 1	-
013	TF	HANUL	-	293(285.7)	15.0	-	+4 000	@210	33°38'58.6"N 126°45'38.8"E	-	RNAV 1	IAF

Change : Amended coordinate format.

JEJU/Jeju Intl(RKPC)
RWY 25
HOLDING PROCEDURE

AERONAUTICAL DATA TABULATION

Standard Instrument Arrival Procedure Coding Tables

HOLDING PROCEDURE												
Holding Identification	Path Descriptor	Waypoint Identifier	Fly-over	Course/Track °M(T)	Time (min)	Turn direction	Altitude (ft)	Speed (kt)	Coordinates	VPA/RDH	Navigation specification	Remarks
RNAV DOTOL 2T	HM	WOODO	Y	350 (342.8)	1.0	R	-FL 160 +9 000	-230	33°34'55.5"N 127°02'56.6"E	-	RNAV 1	-
	HM	HANUL	Y	245 (238.6)	1.0	R	-7 000 +4 000	-230	33°38'58.6"N 126°45'38.8"E	-	RNAV 1	-
RNAV MAKET 2T	HM	WOODO	Y	350 (342.8)	1.0	R	-FL 160 +9 000	-230	33°34'55.5"N 127°02'56.6"E	-	RNAV 1	-
	HM	HANUL	Y	245 (238.6)	1.0	R	-7 000 +4 000	-230	33°38'58.6"N 126°45'38.8"E	-	RNAV 1	-
RNAV TAMINA 2T	HM	WOODO	Y	350 (342.8)	1.0	R	-FL 160 +9 000	-230	33°34'55.5"N 127°02'56.6"E	-	RNAV 1	-
	HM	HANUL	Y	245 (238.6)	1.0	R	-7 000 +4 000	-230	33°38'58.6"N 126°45'38.8"E	-	RNAV 1	-
RNAV TOSAN 2	HM	WOODO	Y	350 (342.8)	1.0	R	-FL 160 +9 000	-230	33°34'55.5"N 127°02'56.6"E	-	RNAV 1	-
	HM	HANUL	Y	245 (238.6)	1.0	R	-7 000 +4 000	-230	33°38'58.6"N 126°45'38.8"E	-	RNAV 1	-
RNAV SOSDO 2T	HM	WOODO	Y	350 (342.8)	1.0	R	-FL 160 +9 000	-230	33°34'55.5"N 127°02'56.6"E	-	RNAV 1	-
	HM	HANUL	Y	245 (238.6)	1.0	R	-7 000 +4 000	-230	33°38'58.6"N 126°45'38.8"E	-	RNAV 1	-
RNAV TOLIS 1T	HM	WOODO	Y	350 (342.8)	1.0	R	-FL 160 +9 000	-230	33°34'55.5"N 127°02'56.6"E	-	RNAV 1	-
	HM	HANUL	Y	245 (238.6)	1.0	R	-7 000 +4 000	-230	33°38'58.6"N 126°45'38.8"E	-	RNAV 1	-

Change : Amended coordinate format.

INTENTIONALLY

LEFT

BLANK